



Always.

Think all insulation
is pretty much
the same ?

INFORMATION FOR HOMEOWNERS



Think again...

Pink® Batts® loves
– **comfort** –



**Is insulation exciting? No.
Is it important? Definitely.**

When you're building a new home, insulation is a no-brainer.

**IT'S THE SINGLE MOST
EFFECTIVE THING YOU CAN
DO TO KEEP YOUR COMFORT
LEVELS HIGH AND YOUR
ENERGY BILLS LOW.**

A warmer, drier, quieter home makes for a happier, healthier family. We should know. We've been making New Zealand's favourite insulation for over 50 years. In that time a lot of new insulation brands have come on the market. Unfortunately not all are created equal.

We love insulation but we realise it's not as exciting as choosing things like kitchens and lighting. So we'll keep things short and sweet and let you get on with the rest of your project.

Pink® Batts® loves



– quality –



You've heard good things about Pink® Batts® insulation - but the Builder's quoted for another brand and you won't see it anyway, so who cares? It's all pretty much the same right? Well, not really.

PINK® BATTS® INSULATION IS MADE FOR NEW ZEALAND CONDITIONS

We meet many of the highest independently assessed industry standards for health, safety and environmental sustainability. But even with over 50 years experience we're not resting on our laurels.

PINK® BATTS® INSULATION IS BETTER THAN EVER

- **Non-combustible.** Pink® Batts® insulation will not catch fire or melt easily when exposed to flame, so it's safer for your home in the event of a fire.
- **Increased rigidity.** Pink® Batts® products are forgiving to touch, making them easier to handle and install. They're also rigid so they won't slump behind your wall and will keep doing a stand up job, year after year.
- **Internationally certified for indoor air quality.** The quality of air in a building has a big impact on the occupant's health and wellbeing. That's why we're proud to have attained GREENGUARD Certification; an independent standard for indoor air quality.
- **Glass wool insulation.** Glass wool fibres generally perform better than other fibrous insulation and need less weight to achieve the same R-value.
- **Something for everyone.** Pink® Batts® insulation comes in a range of different R-values so it's easier to get the right product for the right job and the right budget.
- **Pink® Batts® Lifetime Warranty.** This warranty serves as a reminder that Pink® Batts® BRANZ appraised wall and ceiling products, when installed correctly, will provide high quality insulation for the lifetime of a home. Visit www.pinkbatts.co.nz for details.



A note on downlights

In July 2012 new laws were passed governing the use of downlights. Because it is non-combustible, Pink® Batts® insulation meets these strict new laws and can be safely installed without the need to leave clearances on any downlight that complies with the new standard.





Pink[®] Batts[®] loves – **thinking ahead** –

Under the New Zealand Building Code, new homes have to be insulated to a minimum standard, expressed as an R-value. This rating measures how well insulation can resist heat flow. The higher the R-value, the more effective the insulation.

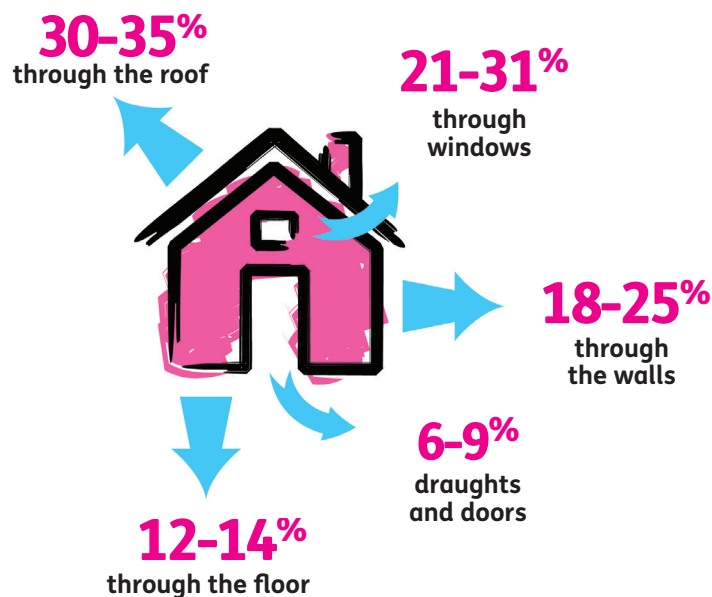
It's important to remember these standards are just the bare bones of what's needed to make a home inhabitable.

A LOT OF PEOPLE WISELY OPT FOR INSULATION WITH A HIGHER R-VALUE. THE SMALL EXTRA UP-FRONT COST VERSUS THE LONG-TERM SAVING MAKES IT A SMART DECISION THAT WILL PAY FOR ITSELF

Heat rises, so upgrading insulation in your ceiling will have the biggest impact on trapping heat and keeping your new home cosy. And while the floor area isn't responsible for a large percentage of heat loss, floor insulation helps comfort levels by blocking cold rising from the ground.

Of course, in an ideal world you'd use the highest R-value possible all throughout your home. But if money's tight and you're forced to choose, it's actually best to concentrate on getting higher-grade insulation into your walls during the build phase. Why? Because once they're clad and finished, it's a big, messy job to go back and retrofit later.

CAN YOU AFFORD TO LOSE THIS MUCH OF YOUR HOME'S HEAT?



Pink® Batts® loves

- quiet -



So you're relaxing in your beautiful new house, but what's that awful racket in the next room?!

ACOUSTIC INSULATION IS A GREAT OPTION IF YOU'RE LOOKING TO CREATE A PEACEFUL HAVEN

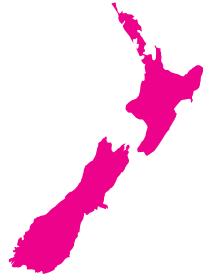
Using Pink® Batts® Silencer® insulation with the GIB® Noiseline® system is the most effective way to turn down the volume on the noisiest areas of your home and protect everyone's privacy. You can install it everywhere to create a peaceful haven or use it strategically to give people a sense of personal space, very important for delicate high-use areas like bathrooms.

There's a range of different options depending on just how quiet you want it. Shhh...was that a pin dropping?

Building more than one level? Then install Pink® Batts® Silencer® MidFloor insulation between floors to reduce sound transmission between levels.



Pink® Batts® loves - new zealand -



We pride ourselves on creating products specifically for New Zealand's unique design aesthetic and environmental conditions.

PINK® BATTS® INSULATION IS MADE UP OF OVER 80% RECYCLED GLASS THAT MIGHT OTHERWISE BE DESTINED FOR LANDFILL.

Here are some of the products we've created to make sure you have the exact right piece to solve your building puzzle.



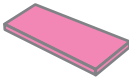
- **Pink® Batts® Skillion Roof Insulation.**

Combats potential moisture build-up by maintaining ventilation clearances to allow more airflow.



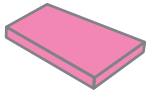
- **Pink® Batts® Steel Framed Wall Insulation.**

Designed longer and wider to fit between the steel framing so popular in New Zealand buildings.



- **Pink® Batts® Narrow Wall insulation**

This option is cut in narrower segments for installation in framing with closer stud spacing.



- **Pink® Batts® 140mm Wall insulation**

Used with 140mm framing, providing a deeper cavity that allows higher levels of insulation, up to R4.0, in walls

Pink® Batts® loves – a good fit –



We're proud of our product, but it can only work properly if it's installed correctly. Any rogue gaps and spaces will allow warm air to get past the insulation and escape, preventing you getting the most out of your smart investment.

PROPER INSTALLATION IS CRITICAL FOR MAKING SURE INSULATION WORKS PROPERLY.

That's why we recommend getting PinkFit® on the job. They understand the principles of thermal insulation and sound control, so you'll get a quick, clean and professional job.

Visit our website www.pinkbatts.co.nz to find a Pink® Batts® installer, stockist or to find out more ring:

0800 PINKFIT
0800 746 534



Pink[®] Batts[®] loves - your current home -

Unless your home was built or re-insulated in the past six years then it is unlikely it will have enough insulation to meet current building code requirements. If so, the Code doesn't require you to re-insulate, but adding insulation is one of the most effective things you can do to improve the comfort levels and energy efficiency of your home.



WHERE SHOULD I INSTALL PINK[®] BATTS[®] INSULATION?



- **The roof - top priority**
The ceiling is where you can make the biggest difference. Since warm air rises, much of a home's heat vanishes through the roof.
- **Fixing the floors - the next step**
Underfloor insulation can have a big impact on your comfort; a thick layer of insulation under your floor will keep the heat in and draughts out.
- **Warmer walls**
Don't miss the opportunity if you are re-lining or re-cladding your walls. If you are planning a big home renovation make sure you insulate your exterior walls.
- **Other things you can do to help stop the heat escaping**
 - Draught proofing your doors and windows are simple and inexpensive steps you can also take to help reduce heat escaping.
 - Double glaze your windows and/or fit heavy duty drapes to reduce heat loss through windows.
 - If you have an older hot water cylinder consider installing a hot water **cylinder wrap** and **pipe lagging**.

VISIT YOUR LOCAL PINK[®] BATTS[®] INSULATION STOCKIST

	LIFETIME WARRANTY #	BRANZ APPRAISED	ENVIRONMENTAL CHOICE	GREENGUARD IAQ CERTIFIED	PRODUCT CODE	SIZE (mm)	NOMINAL STABILISED THICKNESS (mm)	NOMINAL TOTAL AREA PER BALE (m ²)	APPROX. COVERAGE PER BALE* (m ²)
ROOF - Thermal Insulation									
Pink® Batts® Classic R1.8 Ceiling	✓	✓		✓	7110118	1220 x 432	95	13.7	14.4
Pink® Batts® Classic R2.2 Ceiling	✓	✓		✓	7110122	1220 x 432	115	12.6	13.3
Pink® Batts® Classic R2.6 Ceiling	✓	✓		✓	7110126	1220 x 432	140	10.5	11.1
Pink® Batts® Classic R3.2 Ceiling	✓	✓		✓	7110132	1220 x 432	170	8.4	8.8
Pink® Batts® Classic R3.6 Ceiling ‡	✓	✓	✓ ‡	✓	7110136	1220 x 432	180	7.4	7.7
Pink® Batts® Ultra® R4.0 Ceiling	✓	✓	✓	✓	7110140	1220 x 432	195	6.3	6.6
Pink® Batts® Ultra® R4.6 Ceiling	✓	✓	✓	✓	7110146	1220 x 432	215	5.3	5.5
Pink® Batts® Ultra® R5.0 Ceiling	✓	✓	✓	✓	7110150	1220 x 432	220	4.2	4.4
Pink® Batts® Skillion Roof R3.2	✓	✓		✓	7110232	1220 x 432	115 max	3.7	3.9
Pink® Batts® Skillion Roof R3.6	✓	✓	✓	✓	7110236	1220 x 432	165 max	6.3	6.6
WALL - Thermal Insulation									
Pink® Batts® Classic R1.8 Wall	✓	✓		✓	7120118	1140 x 580	90	17.2	19.6
Pink® Batts® Classic R2.2 Wall	✓	✓		✓	7120122	1140 x 580	90	13.9	15.8
Pink® Batts® Classic R2.4 Wall	✓	✓		✓	7120124	1140 x 580	90	10.6	12.1
Pink® Batts® Ultra® R2.6 Wall	✓	✓	✓	✓	7120126	1140 x 580	90	9.9	11.3
Pink® Batts® Ultra® R2.8 Wall	✓	✓	✓	✓	7120128	1140 x 580	90	6.6	7.5
Pink® Batts® R1.0 Masonry Wall	✓	✓		✓	7160110	1220 x 580	40	21.2	-
Pink® Batts® R1.2 Masonry Wall				✓	7160134	1220 x 580	50	17.0	-
Pink® Batts® R3.2 140mm Wall	✓	✓	✓	✓	7120132	1140 x 580	140	9.9	11.3
Pink® Batts® R3.6 140mm Wall	✓	✓	✓	✓	7120136	1140 x 580	140	7.3	8.3
Pink® Batts® R4.0 140mm Wall	✓	✓	✓	✓	7120140	1140 x 580	140	5.3	6.0
Pink® Batts® Steel R2.2 Wall	✓	✓		✓	7160214	1220 x 610	90	15.6	15.6
Pink® Batts® Steel R2.6 Wall	✓	✓	✓	✓	7160215	1220 x 610	90	9.7	9.7
Pink® Batts® R2.2 Narrow Wall NEW	✓	✓		✓	7120123	1140 x 380	90	9.5	11.2
Pink® Batts® R2.6 Narrow Wall NEW	✓	✓	✓	✓	7160207	1140 x 380	90	7.8	9.2
ROOF and WALL - Thermal									
Pink® Batts® HandyPacks R2.4 NEW					7200158	7000 x 580	90	4.06	-
WALL - Acoustic Insulation									
Pink® Batts® Silencer® 100mm				✓	7310001	1140 x 580	100	13.2	14.9
Pink® Batts® Silencer® 75mm				✓	7310003	1140 x 580	75	17.2	19.5
FLOOR - Thermal Insulation									
Pink® Batts® SnugFloor® R1.6 Narrow		✓	✓	✓	7134816	1220 x 480	70	9.4	8.8
Pink® Batts® SnugFloor® R1.6 Wide		✓	✓	✓	7135816	1220 x 580	70	11.3	11.3
Pink® Batts® SnugFloor® R2.6 Narrow		✓	✓	✓	7131451	1220 x 480	110	8.8	8.2
Pink® Batts® SnugFloor® R2.6 Wide		✓	✓	✓	7131601	1220 x 580	110	10.6	10.6
FLOOR - Acoustic Insulation									
Pink® Batts® Silencer® Midfloor				✓	7310051	1140 x 432	150	4.9	5.2
ACCESSORIES									
Pink® Batts® R1.3 Hot Water Cylinder Wrap 4.5m				✓	7140000	4500 x 1200	60	5.4	-
Pink® Batts® R1.3 Hot Water Cylinder Wrap 3.0m				✓	7140002	3000 x 1200	60	3.6	-

* Coverage relates to standard structures (ie with framing allowance) therefore actual coverage may vary

‡ This product is manufactured in both New Zealand and Australia. Environmental Choice New Zealand applies to New Zealand made product only

For full details of the Pink® Batts® Lifetime Warranty visit www.pinkbatts.co.nz



The colour PINK and Pink® are registered trademarks of Owens Corning used under license by Tasman Insulation. Batts® is the registered trade mark of Tasman Insulation. This document supersedes all previous versions and may have been superseded; is a guide only and the purchaser should ascertain the suitability of this product for the end-use situation intended and when used in conjunction with other products; and is provided without prejudice to Tasman Insulation New Zealand Ltd (Tasman) standard terms of sale. Tasman retains the right to change specifications without prior notice. Refer to www.pinkbatts.co.nz or consult Tasman for further information. Do not use this product for any application not detailed in this document. All claims about this product are subject to any variation caused by normal manufacturing process and tolerances. The liability of Tasman and its employees and agents for any errors or omissions in this document or otherwise in relation to the product is limited to the fullest extent permitted by law. Except where the consumer acquires the goods for the purposes of a business, any rights a consumer may have under the Consumer Guarantees Act are not affected.